



Province of the
EASTERN CAPE
ECONOMIC DEVELOPMENT,
ENVIRONMENTAL AFFAIRS & TOURISM

INCWADANA YE-PAIA

**Ilungiswe ngokwecandelo le-14 loMthetho wokuPhakanyiswa
koFikelelo kuLwazi Nomb.2 ka-2000 (njengoko ilungisiwe)**

1. ULUHLU LWEEZIFINYEZO KUNYE NEZISHUNQULELO

- 1.1 **“umrhumo wokufikelela”** umrhumo omiselweyo ngenjongo yeCandelo lama-22(6) okanye lama-54(6), njengoko kunokuba njalo.
- 1.2 **“inkundla yamatyala”** ithetha –
- (a) INkundla yoMgaqo-siseko esebenza ngokweCandelo le-167(6)(a) loMgaqo-siseko weRiphabliki yoMzantsi Afrika, 1996; okanye
 - (b) INkundla ePhakamileyo okanye enye inkundla enesimo esifanayo; okanye
 - (ii) iNkundla kaMantyi, ngokubanzi okanye malunga nodidi lwezigqibo ezichazwe kwi-PAIA, etyunjwe nguMphathiswa, ngesaziso kwiGazethi kwaye eyonganyelwe ngumantyi okanye ngumantyi owongezelelweyo notyunjwe ngokwecandelo lama-91A le-PAIA, kwindawo enolawulo kuyo-
 - (aa) ngesigqibo seGosa loLwazi okanye segunya elifanelekileyo leziko likarhulumente okanye lentloko leziko labucala esithathiweyo;
 - (bb) ngeziko likarhulumente elichaphazelekayo nelinendawo yalo ephambili kulawulo okanye kushishino; okanye
 - (cc) kumfaki-sicelo okanye kumntu wesithathu ohleli ngokusemthethweni okanye ongumhlali;
- 1.3 **“umntu wedatha”** umntu lowo iinkcukacha zinxulumene naye;
- 1.4 **“Isebe”** ISebe loPhuhliso loQoqosho, iMicimbi yokusiNgqongileyo kunye nezoKhenketho leMpuma Koloni
- 1.5 **“u-DIO”** uSekela Gosa woLwazi (noyiNtloko yeSebe)
- 1.6 **“Isikhokelo”** Isikhokelo soMlawuli woLwazi kwi-PAIA
- 1.7 **“i-IO”** Igosa loLwazi
- 1.8 **“Incwadana”** incwadana ye-PAIA yeSebe loPhuhliso loQoqosho, iMicimbi yokusiNgqongileyo kunye nezoKhenketho leMpuma Koloni

- 1.9 **“i-DEDEAT”** ISebe loPhuhliso loQoqosho, iMicimbi yokusiNgqongileyo kunye nezokhenketho
- 1.10 **“i-PAIA”** uMthetho wokuKhuthaza ukuFikelela kuLwazi Nomb. 2 ka-2000
- 1.11 **“umntu”** Umntu okanye umntu womthetho;
- 1.12 **“umfaki-sicelo”** Umfaki-sicelo ofuna ukufikelela kwingxelo egciniweyo eneenkukacha zobuqu malunga nomfaki-sicelo;
- 1.13 **“linkcukacha zobuqu”** linkcukacha ezinxulumene nomntu njengoko kuchaziwe kwicandelo loku-1 le-PAIA.
- 1.14 **“i-PFMA”** uMthetho woLawulo lweMali kaRhulumente Nomb.1 ka-1999
- 1.15 **“i-POPIA”** UMthetho woKhuseleko lweenkcukacha zoMntu Nomb.4 ka-2013
- 1.16 **“Imimiselo ye-POPIA”** Imimiselo yokhuseleko lweenkcukacha zomntu ekhutshwe ngokweCandelo le-122(2) loMthetho woKhuseleko lweenkcukacha zoMntu, ka-2013 (uMthetho Nomb.4 ka-2013);
- 1.17 **“iziko labucala”** ishishini,
- (a) Umntu ophethe okanye owayephetha naluphi na urhwebo, kodwa kweso sikhundla sinjalo kuphela;
 - (b) ubambiswano oluqhuba okanye olwaluqhuba naluphi na urhwebo, ishishini okanye ubungcali;
 - (c) naliphi na iziko elalikhona okanye elikhoyo ngoku elisemthethweni, kodwa alibandakanyi iziko likarhulumente
- 1.18 **“iziko likarhulumente”** sesizwe
- (a) naliphi na izebe likarhulumente okanye ulawulo lwesigaba okanye sephondo likarhulumente okanye nawuphi na umasipala kwisigaba sengingqi; okanye
 - (b) nawuphi na umsebenzi okanye iziko xa –
 - (i) lisebenzisa igunya okanye lisenza umsebenzi ngokoMgaqo-siseko; okanye
 - (ii) lisebenzisa igunya likarhulumente okanye lenza umsebenzi woluntu ngokwawo nawuphi na omnye umthetho

- 1.19 **“irekhodi”** naziphi na iinkcukacha ezirekhodiweyo-
- (a) nokuba ziluhlobo okanye ulwimi olunjani
 - (b) ezigcinwe okanye eziphantsi kolawulo lwelo ziko loluntu okanye labucala ngokulandelelanayo; kwaye
 - (c) nokuba ngaba ziqulunqwe okanye aziqulunqwanga lelo ziko likarhulumente okanye labucala, ngokulandelelanayo;
- 1.20 **“Umlawuli”** Umlawuli woLwazi osekwe ngokwemigaqo yeCandelo lama-39 loMthetho woKhuseleko lweeNkcukacha zoMntu;
- 1.21 **“Umfaki-sicelo”**
- (a) Nawuphi na umntu (ngaphandle kweziko likarhulumente elichazwe kumhlathi (a) okanye (b) elikwinkcazelo yequmrhu likarhulumente, okanye igosa lalo) owenza isicelo sokufikelela kwirekhodi lelo ziko likarhulumente; okanye
 - (b) umntu obambeke endaweni yomntu okhankanywe kumhlathana (a)
- 1.22 **“iqela lesithathu”** Namphi na umntu (kubandakanywa, kodwa kungaphelelanga apho, urhulumente welizwe langaphandle, umbutho wamazwe ngamazwe okanye iziko laloo rhulumente okanye loo mbutho) ngaphandle-
- (a) umfaki-sicelo onxulumeneyo; kwakunye
 - (b) iziko likarhulumente
- 1.23 **“iintsuku zokusebenza”** Naziphi na iintsuku ngaphandle kweMigqibelo, iiCawe okanye iiholide zikawonke-wonke, njengoko zichaziwe kwiCandelo loku-1 loMthetho weeHolide zoLuntu, ka-1994 (uMthetho Nomb. 36 ka-1994)

2. INJONGO YENCWADANA

Le ncwadana ye-PAIA iluncedo kuluntu-

- 2.1 ukukhangela uhlobo lweerekhodi ezinokuthi kanti sele zifumaneka kwi-DEDEAT, ngaphandle kwesidingo sokuba kufakwe isicelo esisesikweni se-PAIA;
- 2.2 ukufumana ulwazi lokuba ungasenza njani isicelo sokufikelela kwirekhodi le-DEDEAT;
- 2.3 ukufikelela kuzo zonke iinkcukacha zoqhagamshelwano ezifanelekileyo zabantu abaya kunceda uluntu ngeerekhodi abafuna ukufikelela kuzo;
- 2.4 ukwazi ngalo lonke uncedo olufumanekayo kwi-DEDEAT malunga nezicelo zokufikelela kwiirekhodi, phambi kokuba uye kuMlawuli okanye kwiiNkundla zaMatyala;
- 2.5 ukwazi ngeenkonzo ezifumanekayo zoluntu ezivela kwi-DEDEAT, kunye nendlela yokufikelela kwezo nkonzo;

- 2.6 ukufumana ingcaciso ngesikhokelo sendlela yokusebenzisa i-PAIA, njengoko ihlaziyiwe nguMlawuli kunye nendlela yokufumana ukufikelela kuyo;
- 2.7 ukwazi ukuba ngaba i-DEDEAT iza kuzijonga na iinkcukacha zomntu, injongo yokujongwa kweenkcukacha zomntu kunye nengcaciso yeentlobo zedatha yomntu kunye neenkukacha zomntu okanye iintlobo zolwazi olunxulumene noko;
- 2.8 ukwazi ukuba ngaba i-DEDEAT icwangcise ukugqithisela okanye ukujonga na iinkcukacha zomntu ongaphandle kweRiphabhliki yoMzantsi Afrika kunye nabamkeli okanye iintlobo zabamkeli ekunokuthi kunikezelwe kubo iinkcukacha zomntu; kwaye
- 2.9 ukwazi ukuba ngaba i-DEDEAT inamanyathelo afanelekileyo na okhuseleko ukuqinisekisa ukuba kukho imfihlo, ukuthembeka kunye nokufumaneka kweenkcukacha zomntu ezizakuqwalaselwa.

3 UKUSEKWA KWE-DEDEAT

I-DEDEAT ifumana igunya layo lomgaqo-siseko kwiShedyuli 4 neyi-5 yoMgaqo-siseko weRiphabhliki yoMzantsi Afrika, 1996. IShedyuli yesi-4 esebenzayo imimandla esebenzayo ubukhulu becala kwinxalenye A ibandakanya uLawulo lweekhasino, imidyarho, ungcazazo nokubheja, ngaphandle kweelotho namachibi ezemidlalo: ukukhuselwa kwabathengi, okusingqongileyo, ukukhuthazwa kwemizi-mveliso, ulondolozo lwendalo, ngaphandle kweepaki zesizwe, izitya zesizwe zezityalo nemithombo yobutyebi baselwandle, ulawulo longcoliseko, amashishini oluntu ephondo ngokubhekiselele kwimimandla esebenzayo yeShedyuli yesi-4, ucwangciso nophuhliso lommandla, ukhenketho, urhwebo, idolophu namaphandle. uphuhliso. Iindawo ezisebenzayo zeShedyuli 5 zisebenza ikakhulu kumaphepha-mvume otywala, kunye nocwangciso lwephondo.

I-DEDEAT ifumana izigunyaziso zayo zowiso-mthetho kuluhlu lowiso-mthetho lwesizwe nolwephondo, kwakunye nemigaqo-nkqubo yamasebe alithoba esizwe, oko kukuthi, iSebe lezoRhwebo, uShishino noKhuphiswano (dtic), amaHlathi, ukuLoba nokusiNgqongileyo (DFFE), iSebe leSizwe lezoKhenketho. (NDT), iMithombo yeziMbiwa kunye naMandla (DMRE), amaShishini kaRhulumente (DPE), uPhuhliso lwamaShishini amaNcinci (DSBD), iSayensi kunye noTshintsho (DSI), kunye noNxibelelwano kunye nobuChwepheshe beDijithali (CDT).

UMBONO

Ngo-2030, iPhondo liya kuba noqoqosho olukhulayo, oluguquliweyo, olwahlukeneyo kunye nolubandakanyayo lokusingqongileyo kwimeko ezinzileyo.

UMTHETHO

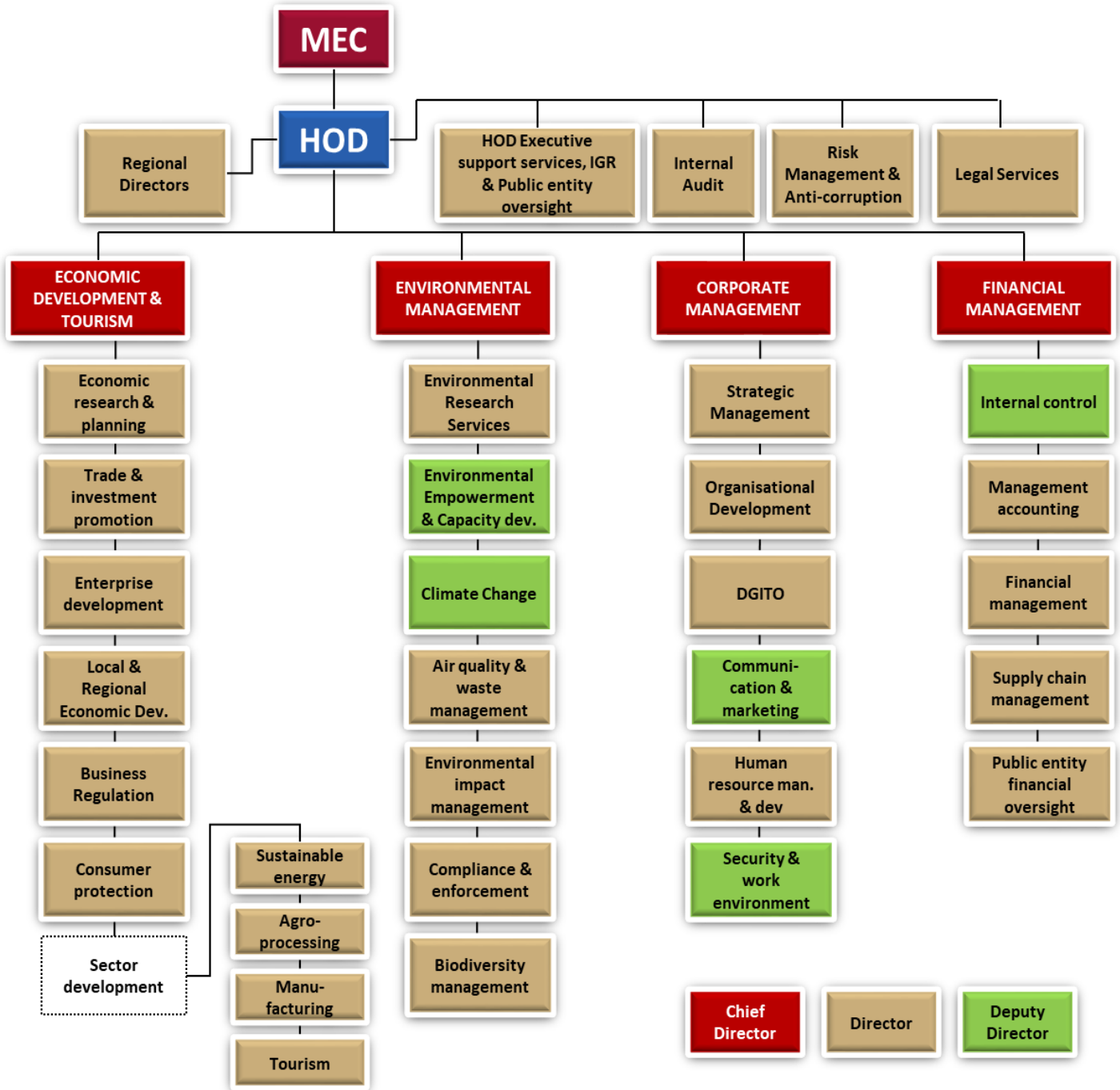
Impembelelo yephondo kuphuhliso loqoqosho oluzinzileyo kwaye oluqukayo nolukhuthaza ulawulo olululo lokusingqongileyo.

IMIGAQO YOKUZIPHATHA

IMIGAQO YOKUZIPHATHA	Ithetha ukuthini kwi-DEDEAT
Intsebenziswano	✓ Siya kusebenzisana kuwo onke amanqanaba olawulo weziko kunye nabo bachaphazelekayo bangaphandle
Ukusungula izinto ezintsha	✓ Siza kulandela iimbono ezintsha kunye neziyilwayo ukukhulisa uqoqosho
Ukuphendula	✓ Siza kubonelela ngengxelo eyaneleyo amaxesha onke ngomsebenzi wethu kwabo bachaphazelekayo bangaphakathi kunye nabangaphandle
Ubunkokeli	✓ Siza kubonelela ngomkhombandlela weqhinga ukuqinisekisa ukukhula koqoqosho kunye nophuhliso oluzinzileyo.

4. UKWAKHIWA KWE-DEDEAT KUNYE NEMISEBENZI YAYO

4.1 ISebe lakhiwe ngokweenkqubo ezintathu ukuzalisekisa isigunyaziso salo njengoko kuchaziwe apha ngasentla



5. IINKCUKACHA ZOQHAGAMSHELWANO ZE-DEDEAT

UNDLUNKULU	
Idilesi yePosi	Eastern Cape Department of Environmental Affairs and Tourism Private Bag X0056 Bhisho 5605 Eastern Cape
Idilesi yeNdawo	Eastern Cape Department of Environmental Affairs and Tourism Erf 5000, Corner of Independence Drive and Circular Drive, Bhisho, 5605 Eastern Cape
IOfisi ye-HoD Mrs. Mickey Mama INtloko yeSebe Ms. Fezeka Boyi UMncedisi: weNtloko yeSebe	Umnxeba: 078 003 7598 I-imeyile: fezeka.boyi@dedea.gov.za
Iwebhusayithi	https://www.dedea.gov.za

6. IINKCUKACHA ZOQHAGAMSHELWANO EZIBALULEKILEYO – ZAMASEKELA GOSA OLWAZI

IGOSA LOLWAZI	IINKCUKACHA ZOQHAGAMSHELWANO
<p>Mrs. Mickey Mama INTloko yeSebe ISebe loPhuhliso lezoQoqosho, iMicimbi yokusiNgqongileyo kunye nezoKhenketho</p>	<p>ISebe leMicimbi yokusiNgqongileyo noKhenketho eMpuma Koloni Isiza esingu-5000, iKona ye-Independence Drive kunye neSetyhula Drive, Bhisho, 5605 Umnxeba: 078 003 7598 I-imeyile: Mickey.mama@dedea.gov.za kwaye Fezeka.Boyi@dedea.gov.za Ronel.debruin@dedea.gov.za</p>
USEKELA GOSA WOLWAZI	IINKCUKACHA ZOQHAGAMSHELWANO
<p>Ms. Ronel de Bruin Umphathi: Iinkonzo zezoMthetho Sebe loPhuhliso loQoqosho, iMicimbi yokusiNgqongileyo kunye nezoKhenketho</p>	<p>ISebe loPhuhliso loQoqosho, iMicimbi yokusiNgqongileyo kunye noKhenketho Isiza esingu-5000, iKona ye-Independence Drive kunye neSetyhula Drive, eBhisho Umnxeba: 060 564 5370 I-imeyile: Ronel.debruin@dedea.gov.za</p>
<p>ULAWULO LOKUSINGQONGILEYO Zonke izicelo zeenkukacha ezinxulumene: -</p> <ul style="list-style-type: none"> • neeNkonzo zoPhando lokusiNgqongileyo • nokuXhotyiswa ngokusiNgqongileyo & noPhuhliso lweZakhono • nokuTshintsha kweMozulu • noMgangatho woMoya kunye noLawulo lweNkunkuma • noLawulo lweMpembelelo yokusiNgqongileyo • nokuThotyelwa kunye noNyanzeliso • noLawulo lwezityalo nezilwanyana ezahlukeneyo • neMvume • noLawulo loMgangatho woMoya • noGunyaziso lokusiNgqongileyo • neziBheno • noLawulo lweNkunkuma 	<p>ISebe loPhuhliso loQoqosho, iMicimbi yokusiNgqongileyo kunye noKhenketho Isiza esingu-5000, iKona ye-Independence Drive kunye neSetyhula Drive, eBhisho Umnxeba: (043) 605-7004 I-imeyile: Environmentalaffairs@dedea.gov.za kwaye Mickey.mama@dedea.gov.za, Fezeka.Boyi@dedea.gov.za, Ronel.debruin@dedea.gov.za</p>

<p>UPHULISO LOQOQOSHO KUNYE NEZOKHENKETHO</p> <p>Zonke izicelo zeenkukacha / zamaxwebhu anxulumene:</p> <ul style="list-style-type: none"> • noPhando lwezoQoqosho kunye noCwangciso • Ukukhuthazwa koRhwebo kunye notyalo-mali • Uphuhliso loShishino • Uphuhliso loQoqosho lweNgingqi kunye noloMmandla (i-LRED) • Imimiselo yoShishino • Ukhuseleko lwabathengi • Uphuhliso lweCandelo <ul style="list-style-type: none"> ○ Amandla Azinzileyo ○ Agro-processing ○ Ukwenziwa kweemveliso ○ Ezokhenketho 	<p>ISEBE loPhuhliso loQoqosho, iMicimbi yokusiNgqongileyo kunye noKhenketho Isiza esingu-5000, iKona ye-Independence Drive kunye neSetyhula Drive, eBhisho</p> <p>Umnxeba: (043) 605-7004</p> <p>I-imeyile: EconomicDevelopment@dedea.gov.za</p> <p>kwaye Mickey.mama@dedea.gov.za, Fezeka.Boyi@dedea.gov.za, Ronel.debruin@dedea.gov.za</p>
<p>ULAWULO LWEZEMALI</p> <p>Zonke izicelo zeenkukacha / zamaxwebhu anxulumene:</p> <ul style="list-style-type: none"> • Ulawulo lwangaphakathi • Ulawulo loCwangciso-mali • Ulawulo lwezemali • Ulawulo lokuthengwa kwezinto • Ukojongwa kweMali yeQumrhu loLuntu • Ubudlelwane phakathi kooRhulumente 	<p>ISEBE loPhuhliso loQoqosho, iMicimbi yokusiNgqongileyo kunye noKhenketho 1st Floor, Chungwa House, Bhisho Central, Bhisho</p> <p>Umnxeba: 078 003 7598</p> <p>I-imeyile: FinancialManagement@dedea.gov.za</p> <p>kwaye Mickey.mama@dedea.gov.za, Fezeka.Boyi@dedea.gov.za, Ronel.debruin@dedea.gov.za</p>
<p>I-OFISI YE-HOD</p> <p>Zonke izicelo zeenkukacha / zamaxwebhu anxulumene:</p> <ul style="list-style-type: none"> • Uphicotho-zincwadi lwangaphakathi • Ulawulo loMngcipheko kunye noRhwapilizo • linkonzo zoMthetho 	<p>ISEBE loPhuhliso loQoqosho, iMicimbi yokusiNgqongileyo kunye noKhenketho Isiza esingu-5000, iKona ye-Independence Drive kunye neSetyhula Drive, eBhisho</p> <p>Umnxeba: (043) 605-7004</p> <p>I-imeyile: FMadministration@dedea.gov.za</p> <p>kwaye Mickey.mama@dedea.gov.za, Fezeka.Boyi@dedea.gov.za, Ronel.debruin@dedea.gov.za</p>

<p>ULAWULO LWESHISHINI</p> <p>Zonke izicelo zeenkukacha / zamaxwebhu anxulumene:</p> <p style="padding-left: 40px;">Ulawulo lweSicwangciso-Qhinga</p> <ul style="list-style-type: none"> • Uphuhliso lweZiko • I-DGITO • Unxibelelwano kunye neNtengiso • Ulawulo lwezaBasebenzi • Ukhuseleko kunye neNdawo ekusetyenzwa kuyo 	<p>ISebe loPhuhliso loQoqosho, iMicimbi yokusiNgqongileyo kunye noKhenketho</p> <p>Isiza esingu-5000, iKona ye-Independence Drive kunye neSetyhula Drive, eBhisho</p> <p>Umnxeba: 078 003 7598</p> <p>I-imeyile: CorporateManagement@dedea.gov.za</p> <p>kwaye</p> <p>Mickey.mama@dedea.gov.za, Fezeka.Boyi@dedea.gov.za, Ronel.debruin@dedea.gov.za</p>
<p>IINKONZO ZOMTHETHO</p> <p>Ms. Ronel de Bruin</p> <p>Umphathi: linkonzo zezoMthetho</p> <p>ISebe loPhuhliso loQoqosho, iMicimbi yokusiNgqongileyo kunye nezoKhenketho</p>	<p>ISebe loPhuhliso loQoqosho, iMicimbi yokusiNgqongileyo kunye noKhenketho</p> <p>Isiza esingu-5000, iKona ye-Independence Drive kunye neSetyhula Drive, eBhisho</p> <p>Umnxeba: 060 564 5370</p> <p>I-imeyile: Ronel.debruin@dedea.gov.za</p>

- 6.1 Izicelo mazingeniswe ngesandla okanye zithunyelwe nge-imeyile kuSekela Gosa woLwazi ngeenkqubo ezahlukeneyo ze-DEDEAT, (njengoko kubonisiwe ngasentla) kulowo ugunyaziswe liGosa loLwazi leSebe, ukuba lihoye zonke izicelo egameni le-DEDEAT.
- 6.2 Abafaki-zicelo bayakhuthazwa ukuba bathumele izicelo zolwazi nge-imeyili ukuba oko kunokwenzeka. Xa kusetyenziswa iinkonzo zeposi, kunyanzelekile ukuba kusetyenziswe iposi ebhalisiweyo. Kubalulekile ukuba ubungqina beposi ebhalisiweyo bugcinwe kwaye buveliswe xa buceliwe.
- 6.3 Xa iileta zisiwa ngesandla, nceda uqinisekise ukuba iileta zifakwe isitampu kwaye ziyasayinwa e-DEDEAT njengobungqina bokuziswa kwazo kunye nomhla wazo.

7. INDLELA YOKWENZA ISICELO SOKUFIKELELA KULWAZI

7.1 Inkgubo

- 7.1.1 Umfaki-sicelo kufuneka agcwalise ngokufanelekileyo **iFomu 2** aze ayingenise kwiGosa loLwazi naku Sekela Gosa woLwazi ochaphazelekayo kwidilesi echazwe kumhlathi 6 apha ngasentla, ukwenzela ukuba umfaki-sicelo akwazi ukufumana impendulo.

- 7.1.2 UGosa woLwazi kufunekaancedise umfaki-sicelo ukuba umfaki-sicelo ufuna uncedo ngenkqubo okanye ngokugcwalisa iifomu, kuquka abafaki-zicelo abangafundanga okanye abakhubazekileyo.
- 7.1.3 Ifomu engeniswe kuGosa woLwazi kufuneka iqulathe lonke ulwazi olufanelekileyo ukuze uGosa woLwazi akwazi ukuchonga ulwazi oluthile oluceliweyo.
- 7.1.4 Umfaki-sicelo kufuneka kwakhona abonise ukuba ngaba ufuna ukufumana ikopi yerekhodi, ukuze alifunde irekhodi kwi-ofisi ye-DEDEAT okanye, kungenjalo, ufuna ukufumana irekhodi ngolunye uhlobo efumaneka ngalo.
- 7.1.5 Isicelo akufuneki sibe seserekhodi eliphantsi kwezizathu zokwaliwa njengoko kuchaziwe phantsi kweSahluko 4 se-PAIA.
- 7.1.6 Ukuba, ngenxa yezizathu ezithile, ufikelelo alunakwenzeka ngendlela ekucelwe ngayo kodwa lube lufumaneka ngolunye uhlobo, umrhumo kufuneka ubalwe ngokwendlela umfaki-sicelo ebecele ngayo kuqala.
- 7.1.7 Umfaki-sicelo kufuneka abonise indlela anqwenela ukwaziswa ngayo ngesigqibo sikaGosa woLwazi malunga nesicelo sakhe (o.k.t. ngeposi, nge-imeyile) kwaye ke ngoko kufuneka anikeze ngeenkukacha ezifanelekileyo ukuze aziswe ngolo hlobo. Nceda ujonge amanqaku abalulekileyo malunga nokusetyenziswa konxibelelwano ngeposi kumhlathi 6 apha ngasentla njengoko kubalulekile kakhulu ekufumaneni kunye nasekujongweni kwezicelo.
- 7.1.8 Ukuba umfaki-sicelo ucela ulwazi egameni lomnye umntu, isikhundla sakhe kunye nobungqina begunya ekwenziwa ngalo isicelo kufuneka buboniswe ngendlela eyanelisa uGosa woLwazi, kwaye oko kugunyaziswa kufuneka kubhalwe phantsi kwaye kusayinwe ngokufanelekileyo.
- 7.1.9 UGosa woLwazi okanye uSekela Gosa woLwazi kufuneka enze isigqibo kwiintsuku ezingama-30 emva kokufumana isicelo kwaye azise umfaki-sicelo ngeso sigqibo.
- 7.1.10 UGosa woLwazi okanye uSekela Gosa woLwazi unokwandisa ixesha leentsuku ezingama-30 kube kanye, kangangexesha elingekho ngaphezulu kweentsuku ezingama-30. I-DEDEAT kufuneka yazise umfaki-sicelo ngoko kwandiswa kunjalo kunye nezizathu zako.

7.2 Izikhoboshelo ezifunekayo:

Umfaki-sicelo kufuneka anikwe ufikelelo kwiirekhodi ze-DEDEAT ukuba eso sicelo sihambelana nazo zonke iimfuno zenkqubo, ukuba ukufikelela kwezo rekhodi akwaliwanga ngazo naziphi na izizathu ezichazwe kwiSahluko 4 se-PAIA.

7.2.1 IFomu 2 egcwaliswe yagqitywa

7.2.2 Ukuba isicelo senziwe egameni lomnye umntu okanye umntu wezomthetho, ubungqina besikhundla sogunyaziso somfaki-sicelo ekwenziwa ngaso isicelo, kufuneka buqhotyoshelwe kwiFomu 2.

7.2.3 Ikopi eqinisekisiweyo yesazisi somfaki-sicelo.

7.2.4 Ubungqina bentlawulo yemali efunekayo.

7.3 Imirhumo

7.3.1 Umrhumo ongabuyiswayo wesicelo oli-R100.00 (okanye njengoko unokulungiswa amaxesha ngamaxesha ngesaziso esibhaliweyo) uhlawulwa ngokubhekisele kwisicelo ngasinye sokufikelela kulwazi okanye kwisibheni sangaphakathi esifakwe kuGosa woLwazi.

7.3.2 Xa i-DEDEAT ifumana isicelo, umfaki-sicelo kufuneka aziswe, kusetyenziswa iFomu 3, ukuba isicelo sivunyiwe na okanye saliwe kwaye ukuba isicelo sivunyiwe, umfaki-sicelo kufuneka aziswe ukuba ahlawule idipozithi yofikelelo nemiselweyo (ukuba ikhona) njengoko kubekiwe, phambi kokuba kujongwe ngakumbi isicelo sakhe.

7.3.3 Abantu abamelwe ngokusemthethweni, naphantsi kweemeko apho kuye kwangenwa kwizivumelwano zentlawulo yeendleko ezingalindelekanga ngumceli kunye nommeli wakhe osemthethweni.

7.3.4 Ukufikelela kwiikopi zeerekhodi kuya kumiswa de kuhlawulwe ngokupheleleyo yonke imirhumo efanelekileyo. Kukho umnyinyiva kubafaki-zicelo abaxolelwe kwangaphambili kulo mba.

7.3.5 Umfaki-sicelo ongonelisekanga yimirhumo efunwayo angafaka isibheni sangaphakathi ngokuchasene neso sigqibo, njengoko kuchaziwe kumhlathi 8.1 ngezantsi.

7.3.6 Imirhumo kufuneka ihlawulwe kwi-akhawunti yebhanki ye-DEDEAT. Idiphozithi

kufuneka ibhalwe ngokuchanekileyo, kwaye ubungqina bentlawulo nganye bungeniswe kwi-DEDEAT.

7.3.7 linkcukacha zebhanki ze-DEDEAT zemirhumo ye-PAIA:

Ibhanki	: Standard Bank
Igama le-akhawunti	: ECPG: DEDEAT
Inombolo ye-Akhawunti	: 273021362
Ikhawudi yeBrantshi	: 051001
Ireferensi ye-PAIA	: PAIA (inishiyali kunye nefani)
Ubungqina beNtlawulo	: PAIA@dedea.gov.za

(kunye nakwi-imeyile yeCandelo ebhalwe kumhlathi 6 apha ngentla)

8. UNCEDO OLUKHOYO

8.1 Isibheni sangaphakathi

- 8.1.1 Apho umfaki-siceli engonelisekanga sisiphumo sesicelo sokufikelela kulwazi, umfaki-sicelo angafaka isibheni sangaphakathi ngokuchasene nesigqibo sikaSekela Gosa woLwazi ngokuthi agcwalise kwaye ahambise iFomu 4 kuGosa woLwazi okanye kuSekela Gosa woLwazi
- 8.1.2 Isibheni sangaphakathi singafakwa ngokuchasene naso nasiphi na isigqibo kwezi zilandelayo zikaGosa woLwazi okanye uSekela Gosa woLwazi:
- 8.1.2.1 Ukwala isicelo sokufikelela
 - 8.1.2.2 Imirhumo ehlawulwayo
 - 8.1.2.3 Ukwandiswa kwexesha lokujongana nesicelo; kwakunye
 - 8.1.2.4 Ukufikelela kwifomu ethile
- 8.1.3 Umfaki-sicelo kufuneka ahlawule umrhumo omiselweyo wesibheni sangaphakathi (apho kufanelekileyo) xa efaka isibheni. Isigqibo sesibheni sangaphakathi, sinokumiswa de umrhumo uhlawulwe.
- 8.1.4 Ngokukhawuleza kangangoko kunokwenzeka, kodwa kwiintsuku ezili-10 zokusebenza emva kokufumana isibheni sangaphakathi, uGosa woLwazi kufuneka angenise isibheni sangaphakathi kwiNkulumbuso yePhondo leMpuma Koloni.
- 8.1.5 UGosa woLwazi kufuneka enze isigqibo ngesibheni sangaphakathi kwiintsuku ezingama-30 emva kokuba isibheni sangaphakathi sizisiwe kuGosa woLwazi naku Sekela Gosa woLwazi.

8.2 Isikhalazo kuMlawuli woLwazi

8.2.1 Umfaki-sicelo angafaka isikhalazo kuMlawuli woLwazi ngokugcwalisa ngokufanelekileyo aze angenise iFomu yesi-5, kodwa kuphela emva kokuba umceli esebenzise inkqubo yangaphakathi yesibheni ngokuchasene nesigqibo sikaGosa woLwazi no SekelaGosa woLwazi we-DEDEAT.

8.3 Ukuya kwiiNkundla zaMatyala

8.3.1 Nangona i-DEDEAT icebisa ukuba abafaki-zicelo bazame ukusombulula iimbambano zabo malunga nokufikelela kulwazi ngaphandle kokuya kwiinkundla zamatyala, umfaki-sicelo unakho, ukuba usaxhalabile, ukuya kwinkundla yamatyala emva kwenkqubo yokubhena yangaphakathi.

9. ISIKHOKELO SOMLAWULI WOLWAZI

- 9.1 Umlawuli, ngokwecandelo 10 (1) le-PAIA, uhlaziye waze wenza ukuba iSikhokelo esihlaziyiweyo sendlela yokusebenzisa i-PAIA (“iSikhokelo”) sifumaneke ngendlela eqondakalayo kwaye elula, njengoko kunokufunwa ngumntu onqwenela ukusebenzisa naliphi na ilungelo elichazwe kwi-PAIA kunye nakwi-POPIA.
- 9.2 Isikhokelo sifumaneka ngolwimi ngalunye kwiilwimi ezisemthethweni.
- 9.3 Esi siKhokelo sichazwe ngasentla siqulethe lengcaciso-
- 9.3.1 iinjongo ze-PAIA kunye neze-POPIA;
 - 9.3.2 idilesi yeposi kunye neyesitalato, inombolo yomnxeba ukuba ikhona, idilesi ye-imeyile-
 - 9.3.2.1 iGosa loLwazi lawo onke amaziko karhulumente, kwakunye
 - 9.3.2.2 Onke amaSekela Gosa oLwazi wamaziko karhulumente kunye nawabucala nonyulwe ngokwecandelo 17(1) le-PAIA kunye nangezandelo lama-56 le-POPIA;
 - 9.3.3 indlela kunye nohlobo lwesicelo-
 - 9.3.3.1 sokufikelela kwirekhodi leziko likarhulumente elichazwe kwicandelo 11; kunye
 - 9.3.3.2 sokufikelela kwirekhodi leziko labucala elichazwe kwicandelo 50;
 - 9.3.4 uncedo olufumanekayo kwiGosa loLwazi nakuSekela Gosa woLwazi leziko likarhulumente ngokwe-PAIA kunye nangokwe-POPIA;
 - 9.3.5 uncedo olufumanekayo kuMlawuli ngokwemiqathango ye-PAIA kunye neye-POPIA;
 - 9.3.6 zonke izisombululo ezikhoyo ezisemthethweni malunga nesenzo okanye ukusilela

ukwenza ngokubhekiselele kwilungelo okanye kwixanduva elinikezwe okanye elibekwe kwi-PAIA kunye nakwi-POPIA, kuquka indlela yokufaka-

9.3.6.1 isibheni sangaphakathi;

9.3.6.2 isikhalazo kuMlawuli; kwakunye

9.3.6.3 isicelo enkundleni esichasene nesigqibo segosa lolwazi leziko likarhulumente, isigqibo sesibheni sangaphakathi okanye isigqibo esenziwe nguMlawuli okanye isigqibo esenziwe yintloko yeziko labucala;

9.3.7 amagatya ecandelo le-14 kunye nelama-51 afuna ukuba iziko likarhulumente kunye nelabucala, ngokulandelelanayo, ukuba aqulunqe incwadana, kunye nendlela yokufikelela kulo ncwadana;

9.3.8 amagatya ecandelo le-15 kunye nelama-52 achaza ngokubhengezwa ngokuzithandela kweendidi zeerekhodi kumaziko karhulumente kunye nawabucala, ngokwahlukeneyo;

9.3.9 izaziso ezikhutshwe ngokwemiqathango yecandelo lama-22 kunye nelama-54 malunga nemirhumo emayihlawulwe ngokunxulumene nezicelo zokufikelela; kwaye

9.3.10 imimiselo eyenziwe ngokwecandelo lama-92.

9.4 Uluntu lunokuhlola okanye lwenze iikopi zeSikhokelo kwii-ofisi zikarhulumente okanye kwezabucala, kuquka ne-ofisi yoMlawuli, ngexesha eliqhelekileyo lokusebenza. Isikhokelo sinokufumaneka-

9.4.1 ngesicelo kwiGosa loLwazi;

9.4.2 kwiwebhusayithi yoMlawuli (<https://www.justice.gov.za/inforg/>).

10 IZIHLOKO APHO I-DEDEAT IGCINE IINGXELO ZAZO

Izihloko aphe iziko ligcine iirekhodi zazo	Iindidi zeerekhodi ezigcinwe kwizihloko ngasinye
Amaxwebhu oCwangciso-Qhinga, iziCwangciso, iiNtetho kunye neeNgxelo ezisemthethweni	Izicwangciso-qhinga, IziCwangciso zokuSebenza zoNyaka; IziCwangciso zokuSebenza, IziCwangciso zokuPhuculwa koNikezelo lweeNkonzo,

Izihloko apho iziko ligcine iirekhodi zazo	Iindidi zeerekhodi ezigcinwe kwisihloko ngasinye
	liNngxelo zoNyaka, iiNtetho zoMgaqo-nkqubo; liNtetho zoBume bePhondo
Uphando	Izicwangciso zoPhando lingxelo zoPhando liRekhodi zokuBeka iliso kunye noVavanyo
Imicimbi yaBasebenzi kunye neeNkonzo eziManyanisiweyo	<ul style="list-style-type: none"> - Imigaqo-nkqubo kunye neeNkqubo ze-HR; - Izithuba ezipapashiweyo; - Iirekhodi zokuqesha - Iirekhodi zabaSebenzi; - UkuFunda kunye noPhuhliso umzkl: iziCwangciso zoPhuhliso lweZakhono kunye noQeqesho; - IsiCwangciso soBulungisa kwezeNgqesho kunye neeNkcukacha-manani; - Iileta; - Ulwazi lweNkampani; - lingxelo zemidiya; - lintetho kunye neMiyalezo; - liflaya zeMpilontle kunye neePowusta; - Unxibelelwano ngokuchasa ubuqhophololo kunye noRhwaphilizo; - Iincwadana - Umboniso wevidiyo wemisitho esemthethweni
Amaxwebhu eMali	<ul style="list-style-type: none"> - Isityithimenti sezemali; - lingxelo zoPhicotho-zincwadi; - Uhlahlo lwabiwo-mali; - Amaxwebhu oLawulo lokuThengwa kweZinto abandakanya iinkcukacha zeethenda, izibhengezo zethenda, iirejista zokubhida, ukufakwa kweebhidi, iingxelo zovavanyo lweebhidi, iingxelo zokujongwa kweethenda, iileta zokuqeshwa, iileta eziya kwabo bangaphumelelanga kwithenda, kunye neerekhodi zolawulo lwe-asethi.

Izihloko apho iziko ligcine iirekhodi zazo	Iindidi zeerekhodi ezigcinwe kwisihloko ngasinye
Amaxwebhu okuSebenza	<ul style="list-style-type: none"> - Amaxwebhu oMgaqo-nkqubo kunye neNkqubo; - Unxibelelwano kunye neeRekhodi ezimalunga neMisebenzi ye-DEDEAT.
Amaxwebhu eeNkonzo zoMthetho	<ul style="list-style-type: none"> - Iikhontrakthi; - Izimvo zoMthetho; - Iirekhodi ezinxulumene nako konke ukuMangalelwa kunye neNkqubo zokuSombulula iiMbambano; - Iinkcukacha-manani okuMangalelwa, - Umthetho

11. IINKONZO EZIFUMANEKAYO KULUNTU NOKUBA ZIFUMANEKA NJANI EZO NKONZO.

ISebe ngamaqumrhu alo amathandathu, linikezela ngesigunyaziso esibalulekileyo ngokubonelela ngeenkonzo ekujoliswe kuzo kwabachaphazelekayo abaphambili.

Abachaphazelekayo baquka uluntu ngokubanzi, oosomashishini kuquka abanini nabaphathi bamashishini asakhasayo, amancinci naphakathi kunye noomasipala, amasebe asebenzisanayo kunye nabanye abachaphazelekayo abagxile ekulawuleni indalo esingqongileyo

La maqumrhu anempembelelo ephezulu ngala:

- I-Coega Development Corporation kuquka i-Coega SEZ
- IQumrhu loPhuhliso leMpuma Koloni
- IBhodi yoNgcakazo yeMpuma Koloni
- IBhodi yoTywala yeMpuma Koloni
- Indawo yoPhuhliso lwamaShishini eMonti
- I-Arhente yeePaki noKhenketho eMpuma Koloni

I-DEDEAT ibonelela ngenkxaso yecandelo loshishino olulodwa kwezi ndawo zilandelayo:

- Ezolimo kunye nemveliso yezolimo
- Ishishini lokuyila
- Uqoqosho lohlaza
- Ulwazi nonxibelelwano
- Ukwenziwa kwemveliso

- Ukhenketho
- Ivenkile
- Izinto ezilukiweyo kunye nezobugcisa
- UQoqosho lwaseLwandle

Ikwabonelela ngenkxaso yoshishino kumaShishini amaNcinci, amaNcinci namaPhakathi (MSME)

I-DEDEAT ibonelela ngenkxaso-mali kunye nemali ngokusebenzisa:

- Imvaba Co-operative Fund
- INgxowa-mali yoVuselelo lweMisebenzi
- Ingxowa-mali yoPhuhliso loQoqosho eMpuma Koloni
- Ingxowa-mali yoPhuhliso lweNgingqi, yoMmandla noQoqosho (LRED)

I-Ofisi yoMkhuseli wabathengi ikwaphakathi kweDEDEAT kwaye iinkonzo eziphambili ezibonelelwayo yiMfundo yaBathengi kunye noKwazisa kunye nokunceda abemi / abathengi ngezikhhalazo ezinxulumene nabathengi

Iinkonzo zokusingqongileyo zezi zilandelayo:

- Ukuthotyelwa nokuNyanzeliswa kokusiNgqongileyo
- Ulawulo lweMpembelelo yokusiNgqongileyo
- IiMvume zePhondo zeBiodiversity
- UkuJonga uMgangatho woMoya
- Iinkonzo zoLawulo loMgangatho woMoya
- UCwangciso loMgangatho woMoya kunye noLawulo loLwazi
- UGunyaziwe weLayisensi yaManzi
- Ukwaziswa kokusiNgqongileyo kunye nokuXhotyiswa ngeZakhono
- Iinkonzo zeNzululwazi

12. UKUTHATHA INXAXHEBA KOLUNTU EKUQULUNQWENI KOMGAQO-NKQUBO OKANYE EKUSEBENZISENI AMAGUNYA OKANYE EKWENZIWENI KWEMISEBENZI YI-DEDEAT.

12.1 Apho ukuqulunqwa komgaqo-nkqubo kuya kukhokelela kuwiso-mthetho, i-DEDEAT icela izimvo zoluntu ngomgaqo-nkqubo lowo ngokuwupapasha kwiGazethi yePhondo ukuze uluntu luhlomle kwaye iququzelele ukubanjwa kweendibano zovakaliso-zimvo.

12.2 Uluntu lusenkuthi ngaphezu koko lube nempembelelo engathanga ngqo ekuqulunqweni komgaqo-nkqubo ngokunxibelelana nabameli babo abanyuliweyo kunye nangokuzimasa iiseshoni zeNdlu yoWiso-mthetho yePhondo.

linkonzo zokusingqongileyo zezi zilandelayo:

- Ukuthotyelwa nokuNyanzeliswa kokusiNgqongileyo
- Ulawulo lweMpembelelo yokusiNgqongileyo
- IiMvume zePhondo zeBiodiversity
- UkuJonga uMgangatho woMoya
- linkonzo zoLawulo loMgangatho woMoya
- UCwangciso loMgangatho woMoya kunye noLawulo loLwazi
- UGunyaziwe weLayisensi yaManzi
- Ukwaziswa kokusiNgqongileyo kunye nokuXhotyiswa ngeZakhono
- linkonzo zeNzululwazi

Ukufumana ulwazi oluthe kratya ngezi nkonzo kunye neenkonzo ezibonelelwa ngamagqumrhu oluntu eDEDEAT kunye nendlela yokufikelela kuyo, khuphela uhlelo luka-2024 lwencwadana yeenkonzo zeDEDEAT ebandakanya konke

13. UKUJONGWA KWEENKCUKACHA ZOMNTU

a. Injongo yokujongwa

I-DEDEAT ijonga iinkcukacha zomntu ezinxulumene nokusebenza kunye nemisebenzi ye-DEDEAT, echazwe kumhlathi we-12 apha ngasentla.

b. Inkcazelo

Inkcazelo yeendidi zabantu bedatha kunye neenkcukacha okanye iindidi zeenkcukacha ezinxulumene nabo zibekwe kwitheyibhile engezantsi:

Iindidi zaBantu beDatha	Iinkcukacha zoMntu ezinokujongwa
Abantu	Igama kunye nefani; iinkcukacha zoqhagamshelwano (inombolo yomnxeba, idilesi ye-imeyile); idilesi yokuhlala, yeposi kunye/okanye yeshishini; inombolo yokuchonga eyahlukileyo; iinkcukacha zendawo; uhlanga; isini; ukukhulelwa; ubume obuxela ukuba utshatile okanye awutshatanga na; ubuzwe, imvelaphi yentlalo; umbala ukwaziswa ngezondo; ubudala; impilo ngokomzimba okanye ngokwengqondo; intlalontle; ukukhubazeka; inkolo; isazela; inkolelo; inkcubeko; ulwimi; ukuzalwa; imbalelwano eyimfihlo; imfundo; imbali yezonyango, yezemali, yolwaphulo-mthetho okanye yengqesho ebandakanya nenokufunwa kwiNkqubo yoBhaliso lweZigulane kwiSebe lezeMpilo.

Iindidi zaBantu beDatha	Iinkcukacha zoMntu ezinokujongwa
Abantu bezomthetho	Amagama abantu ekuqhagamshelwana nabo; igama lequmrhu elisemthethweni; idilesi yendawo kunye neyeposi; iinkcukacha zoqhagamshelwano (iinombolo zoqhagamshelwano, inombolo yefeksi, idilesi ye-imeyile); inombolo yobhaliso; ulwazi lwezemali, lwezorhwebo, lwenzululwazi okanye lezobuchwephesha kunye neemfihlo zorhwebo.
Abasebenzi	Isini, ukukhulelwa; ubume obuxela ukuba utshatile okanye awutshatanga na; uhlanga; ubudala, ulwimi, iinkcukacha zezemfundo (iziqinisekiso); ulwazi lwezemali; imbali yokuqeshwa; inombolo ye-ID; idilesi yendawo kunye neyeposi; iinkcukacha zoqhagamshelwano (iinombolo zoqhagamshelwano, inombolo yefeksi, idilesi ye-imeyile); ukuziphatha kulwaphulo-mthetho; intlalo-ntle kunye neyezalamane zabo (amalungu osapho); uhlanga; ezonyango; isini; ubuzwe; imvelaphi yobuhlanga okanye yentlalo; ukwaziswa ngezondo; ubudala, impilo ngokomzimba okanye ngokwengqondo; intlalo-ntle; ukukhubazeka; inkolo; isazela; inkolelo; inkcubeko; ulwimi; iinkcukacha zebhayometriki yomntu njengoko zifuneka kwimimiselo kunye nakwimigaqo-nkqubo yeenkonzo zikarhulumente.

c. Abamkeli

Abamkeli okanye iindidi zabamkeli ekunokuthi zinikezelwe kubo iinkcukacha zomntu, bachazwe kwitheyibhile engezantsi:

Iindidi zeenkukacha zomntu	Abamkeli okanye iindidi zabamkeli
Iinombolo zesazisi, amagama, iidilesi, ingqesho kunye nembali yemfundo ukuze kujongwe ulwaphulo-mthetho	IiNkonzo zamaPolisa oMzantsi Afrika kunye nezinye ii-arhente zogcino-mthetho
Iziqinisekiso zeMfundo, ukuze ziqinisekiswe	UGunyaziwe wemiGangatho-mfundo waseMzantsi Afrika
Iinombolo zesazisi, amagama, kunye needilesi	Ababoneleli ngeenkonzo (kubandakanywa nabameli bezomthetho kwimiba yezimangalo) I-DEDEAT inekhonthakthi ekufuneka ibe nayo

	ukufikelela kwiinkcukacha zomntu
linkcukacha zonyango	Amaqela omthetho asebenza egameni le-DEDEAT
linkcukacha zabasebenzi	libhanki kunye namanye amaziko emali, abalawuli bengxowa-mali yomhlalaphantsi, imibutho yabasebenzi

14.4 Ukuhanjiswa kwelinye iLizwe

14.4.1 I-DEDEAT ayicwangcisanga nakuphi na ukuhanjiswa kweenkcukacha zomntu ziye kwelinye ilizwe. Nangona kunjalo, ukuba kuye kwafuneka ukuba kudluliselwe iinkcukacha zomntu kwelinye ilizwe ngazo naziphi na iinjongo ezisemthethweni, i-DEDEAT iya kuqinisekisa ukuba nabani na edlulisela kuye iinkcukacha zomntu kwenziwa phantsi komthetho, kwemigaqo ebophelelayo yequmrhu okanye kwesivumelwano esibophelelayo nesinika inqanaba elaneleyo lokhuseleko, kwaye iqela lesithathu liyavuma ukuphatha ezo nkcukacha zomntu ngenqanaba elifanayo lokhuseleko nele-DEDEAT njengoko kunyanzelekile phantsi kwe-POPIA.

14.4.2 Nakuphi na ukuhanjiswa kweenkcukacha zomntu zisiya kwelinye ilizwe kuya kwenziwa ngemvume yomntu wedatha okanye ukuba ukudluliswa kuyimfuneko ekuqokunjelweni okanye ekusebenzeni kwekhontrakthi egqitywe phakathi kwe-DEDEAT kunye neqela lesithathu ngenxa yomdla walo kumntu wedatha. Nangona kunjalo, ukuba akunakwenzeka ngokufanelekileyo ukufumana imvume yomntu wedatha, i-DEDEAT iya kudlulisela iinkcukacha zomntu ukuba ukudluliswa oko kuya kuba luncedo kumntu wedatha, kwaye umntu wedatha uya kunika imvume ukuba kunokwenzeka ngokufanelekileyo ukufumana imvume enjalo.

14.5 Amanyathelo oKhuseleko eeNkcukacha

14.5.1 I-DEDEAT ithe gqolo ukuseka kunye nokugcina amanyathelo afanelekileyo, obuchule kunye naweziko, ngokuthatha amanyathelo okuthintela:

14.5.1.1 ilahleko, umonakalo okanye ukutshatyalaliswa okungagunyaziswanga kweenkcukacha zomntu; kwaye

14.5.1.2 ukufikelela okanye ukusetyenziswa ngokungekho semthethweni kweenkcukacha zomntu.

14.5.2 I-DEDEAT ithathe amanyathelo afanelekileyo, njengoko kukhankanyiwe kwimihlathi 14.5.1 kunye naku-14.5.3, ukuze:

14.5.2.1 kuchongwe yonke imingcipheko yangaphakathi kunye neyangaphandle enokubakho kwiinkcukacha zomntu ezikuyo okanye eziphantsi kolawulo lwayo;

- 14.5.2.2 kusekwe kwaye kugcinwe izikhuselo ezifanelekileyo ngokuchasene nemingcipheko echongiweyo;
- 14.5.2.3 kuqinisekiswa rhoqo ukuba izikhuselo ziphunyezwa ngokufanelekileyo; kwaye
- 14.5.2.4 kuqinisekiswa ukuba izikhuselo zihlaziywa rhoqo ukumelana nemingcipheko emitsha kukhuseleko oluphunyezwe ngaphambili.

14.5.3 Amanyathelo athathwe yi-DEDEAT abandakanya:

- 14.5.3.1 Ulawulo lokuFikelela;
- 14.5.3.2 Ufihlo lweDatha;
- 14.5.3.3 Amanyathelo oKhuselo;
- 14.5.3.4 Ukubeka iliso, ukuPhicotha kunye nokuNika iNgxelo ngezakhono okuqinileyo;
- 14.5.3.5 Ugcino lweDatha;
- 14.5.3.6 Izisombululo zeAnti-virus kunye neze-Anti-malware;
- 14.5.3.7 Ukuqonda kunye nokuQaphela; kwaye
- 14.2.3.8 Izivumelwano ezigqitywe nabaSebenzisi ukuphumeza ulawulo lokhuseleko.

15 UKUFUMANEKA KWENCWADANA

15.1 Le Ncwadana iza kufumaneka ngoko nangoko ngezi lwimi zilandelayo-

- IsiNgesi
- IsiXhosa
- IAfrikaans

15.2 Inguqulelo yesiNgesi yale ncwadana ifumaneka ngoku ngolu hlobo lulandelayo-

15.2.3 kwiwebhusayithi: <https://www.dedea.gov.za>

15.2.4 kundlunkulu ukuze ihlolwe luluntu ngeeyure eziqhelekileyo zokusebenza;

15.2.5 kuye nawuphi na umntu ngesicelo kunye nangentlawulo yomrhumo omiselweyo nofanelekileyo; kunye

15.3 nakuMlawuli woLwazi ngesicelo.

15.4 Umrhumo wekopi yeNcwadana, uya kuhlawulwa ngefotokopi nganye eyenziweyo eyi-A4.

16 UKUTHATHA INXAXHEBA KOMCHONGELI WEEDATHA


Itheyibhile ezokulandela ibonisa iindlela ezahlukeneyo umchongeli weedatha anokuthatha ngazo inxaxheba ekusetyenzisweni kolwazi lwasebunikeneni nguDEDEAT, ibonisa ukuba yiphi ifomu nenkqubo ekufuneka isetyenziswe:

Yintoni	Njani
Faka isicelo, simahla, ukubuza ukuba na DEDEAT ibambe ulwazi lwasebunikeneni malunga nomchongeli weedatha.	PAIA Form 2
Faka isicelo serekhodi okanye inkcazelo yolwazi lwasebunikeneni malunga nomchongeli weedatha obanjwe nguDEDEAT, kubandakanywa ulwazi malunga nobuqu bawo onke amaqela wesithathu, okanye iindidi zamaqela wesithathu, athe okanye abenalo ukufikelela kulwazi lwasebunikeneni.	PAIA Form 2 Qaphela: limali, amaxesha kunye nezizathu zokukhanyela ezisebenza kuzo zonke izicelo ze-PAIA zisebenza napha.
Faka isicelo sokulungisa okanye ukucima ulwazi lwasebunikeneni malunga nomchongeli weedatha okukulo DEDEAT okanye phantsi kolawulo lwaDEDEAT olulingeneyo, olungafanelekanga, oluthe xabiso, oludala, olungapheleleyo, olukhohlisayo, okanye oluthatyathwe ngokungekho mthethweni	POPIA Form 2
Faka isicelo sokutshabalalisa okanye ukucima irekhodi yolwazi lwasebunikeneni malunga nomchongeli weedatha athi uDEDEAT angasenasemthethweni ukuigcina.	POPIA Form 2
Faka isichaso sokunqandwa kolwazi lwasebunikeneni.	POPIA Form 1

17 UKUHLAZIYWA KWENCWADANA

I-DEDEAT iya kuthi, ukuba kuyimfuneko, ihlaziye kwaye ipapashe le ncwadana rhoqo ngonyaka.

IKHUTSHWE NGU:


[Mickey Mama \(Jun 29, 2026 11:06:37 GMT+2\)](#)
 Mrs. Mickey Mama
 INTloko yeSebe
 ISebe loPhuhliso loQoqosho, iMicimbi
 yokusiNgqongileyo kunye noKhenketho

29/06/2026

Umhla